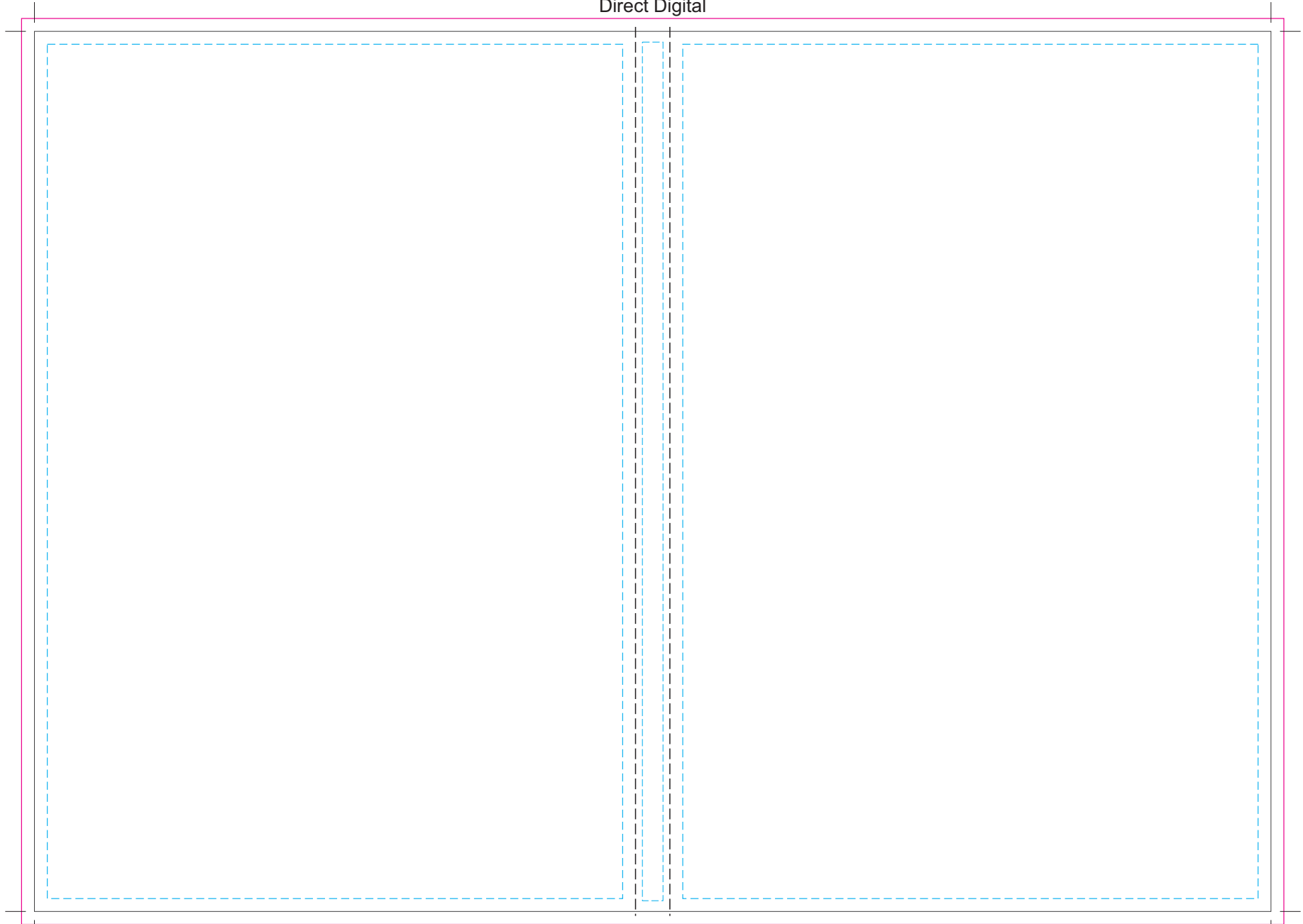


80% of Actual Size
Direct Digital



BACK

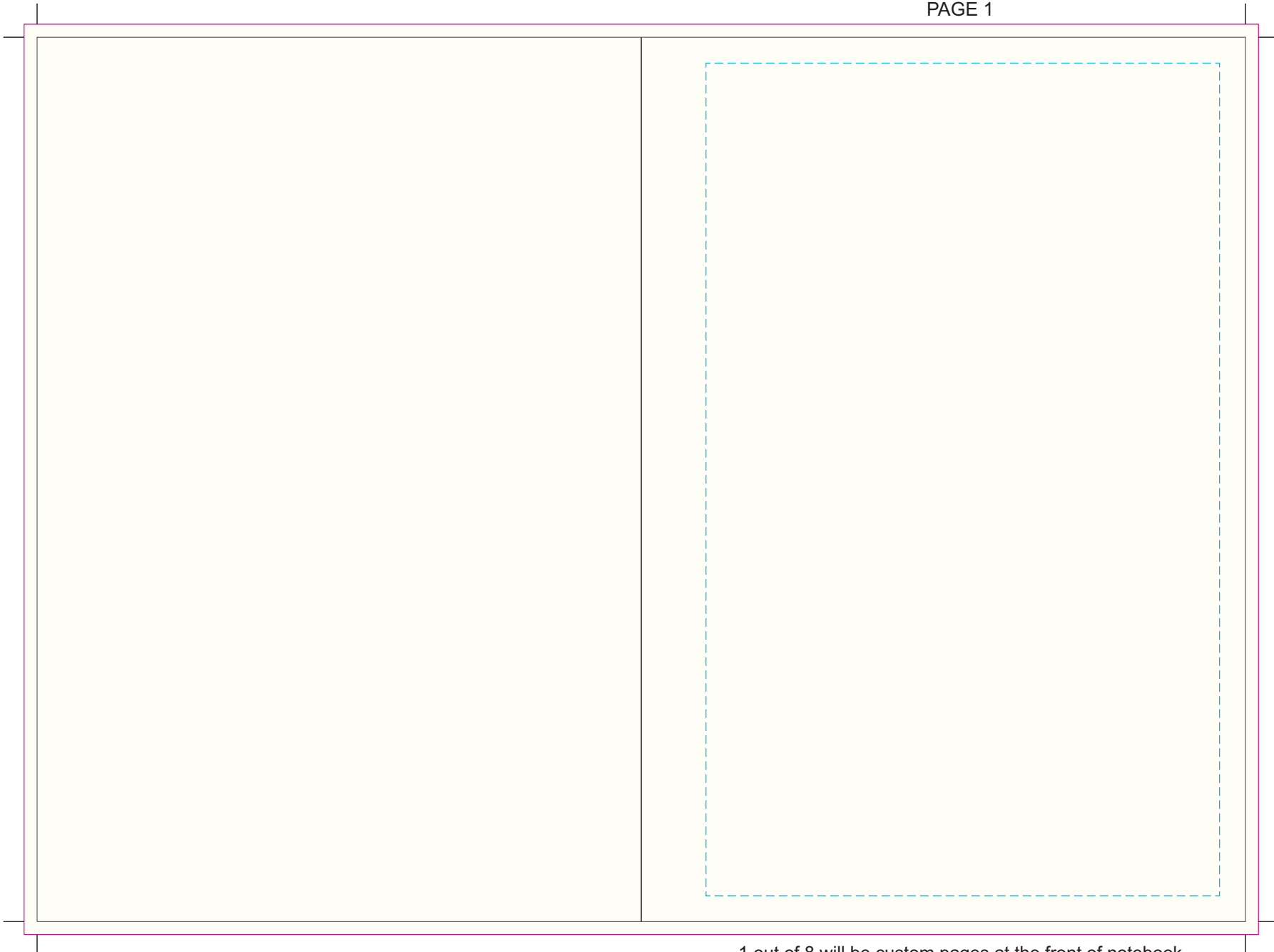
SPINE

FRONT

Blue Line = The SIGNIFICANT PRINT AREA
(Keep all critical images & text within this box)

Black Line = Maximum print area

Pink Line = Bleed off to here

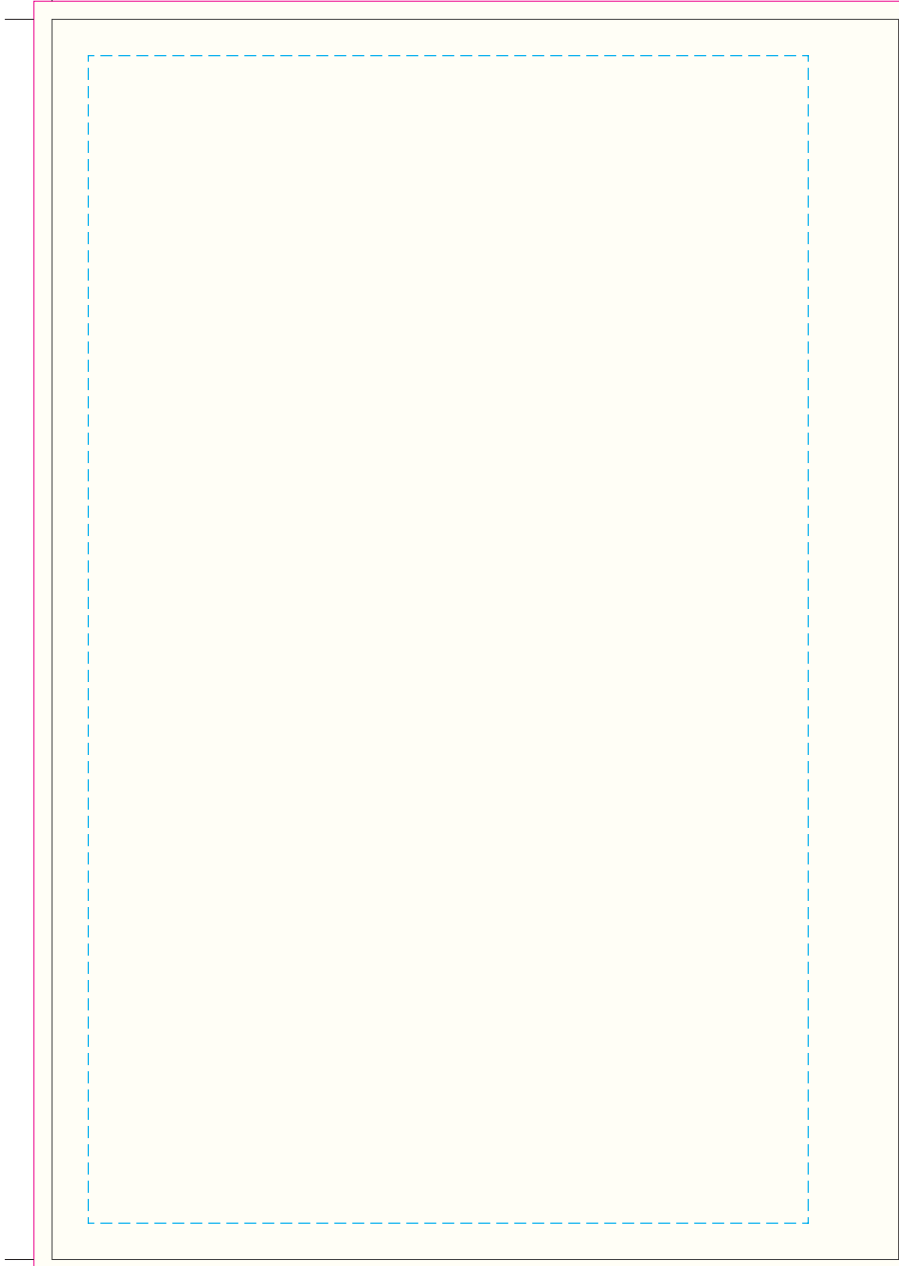


1 out of 8 will be custom pages at the front of notebook

Blue Line = The SIGNIFICANT PRINT AREA
(Keep all critical images & text within this box)

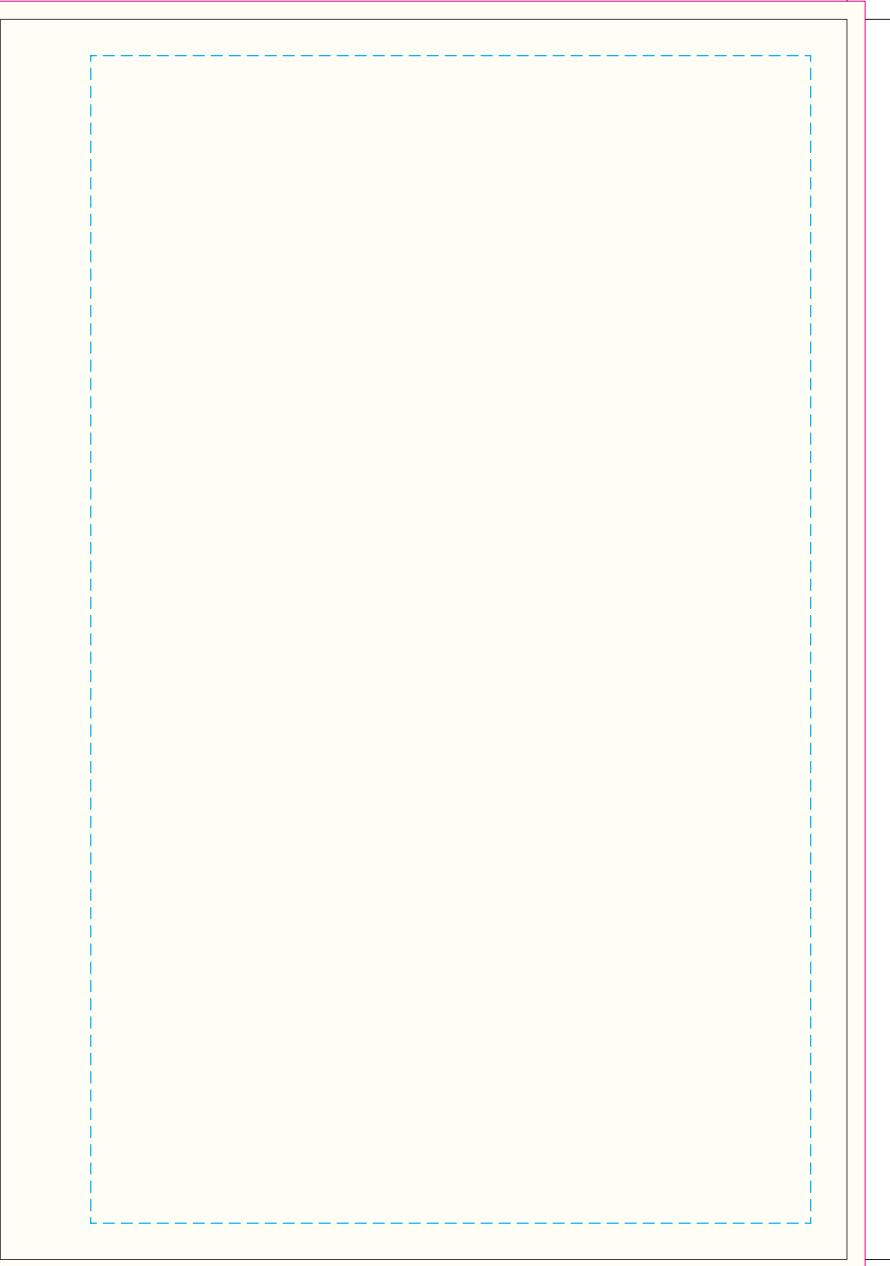
Black Line = Maximum print area

Pink Line = Bleed off to here



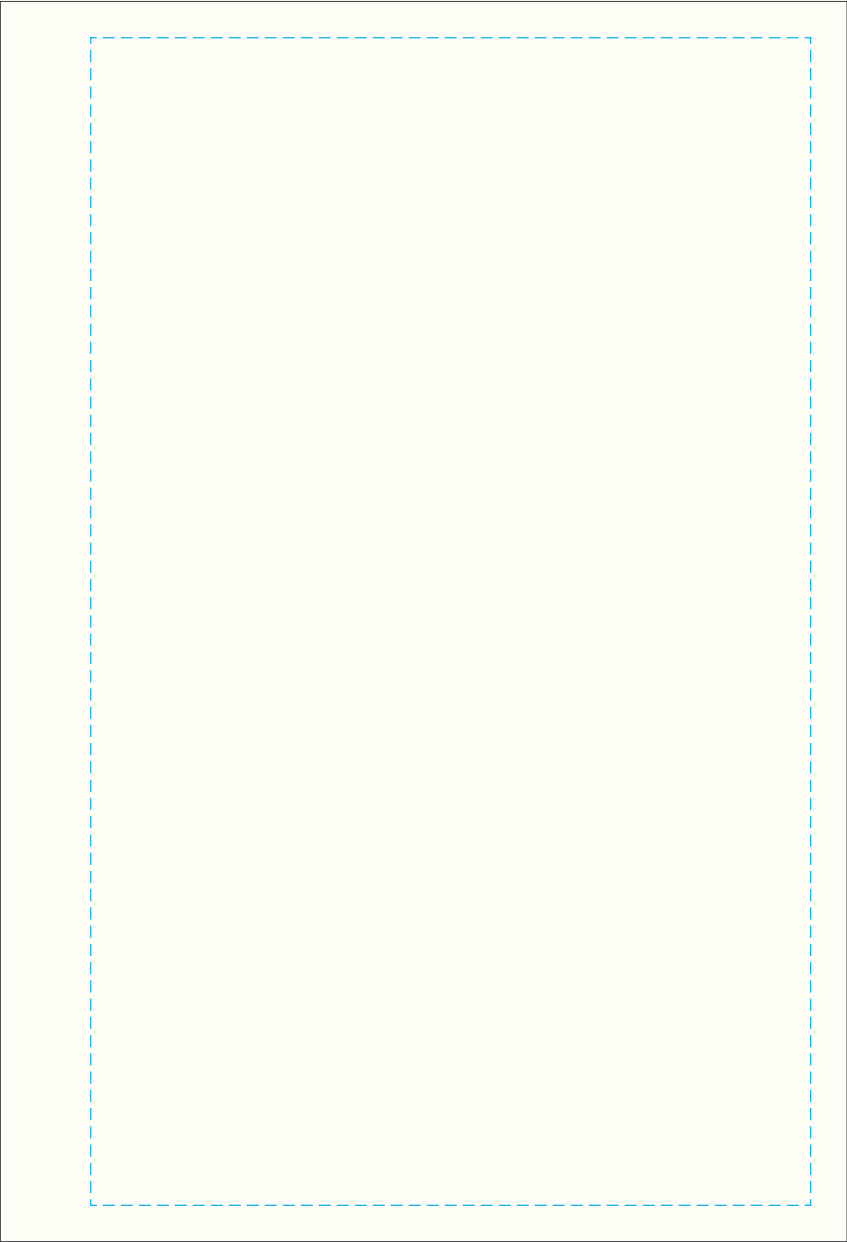
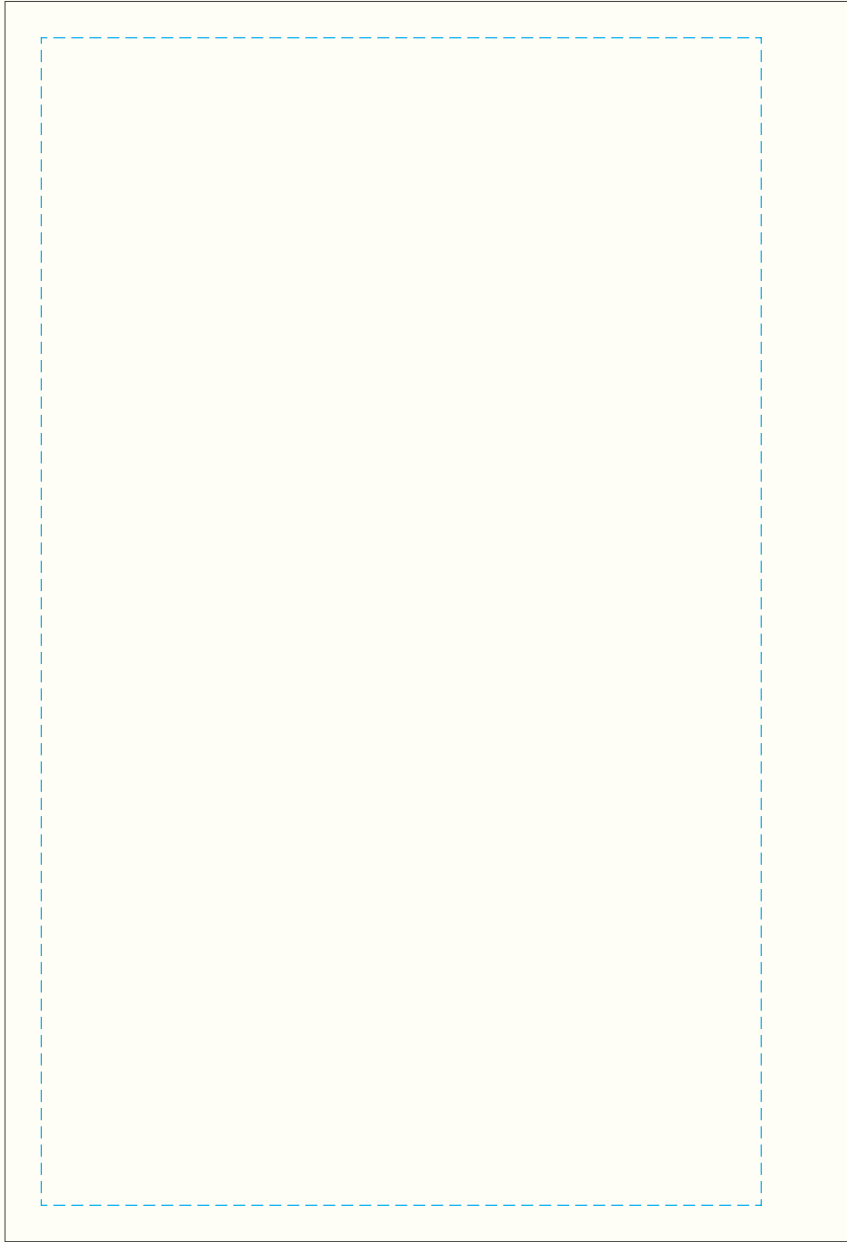
2 out of 8 will be custom pages at the front of notebook

Blue Line = The SIGNIFICANT PRINT AREA
(Keep all critical images & text within this box)
Black Line = Maximum print area
Pink Line = Bleed off to here



3 out of 8 will be custom pages at the front of notebook

Blue Line = The SIGNIFICANT PRINT AREA
(Keep all critical images & text within this box)
Black Line = Maximum print area
Pink Line = Bleed off to here

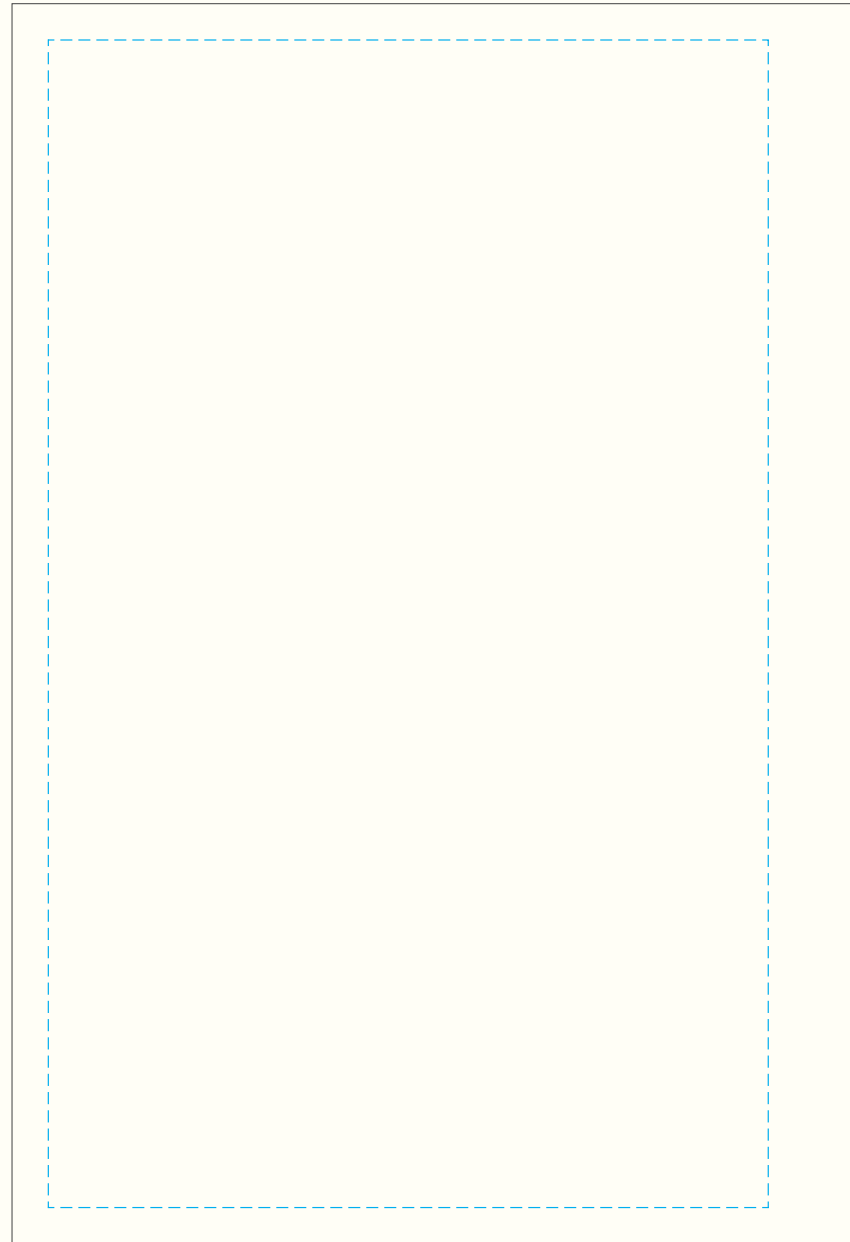


4 out of 8 will be custom pages at the front of notebook

Blue Line = The SIGNIFICANT PRINT AREA
(Keep all critical images & text within this box)
Black Line = Maximum print area
Pink Line = Bleed off to here

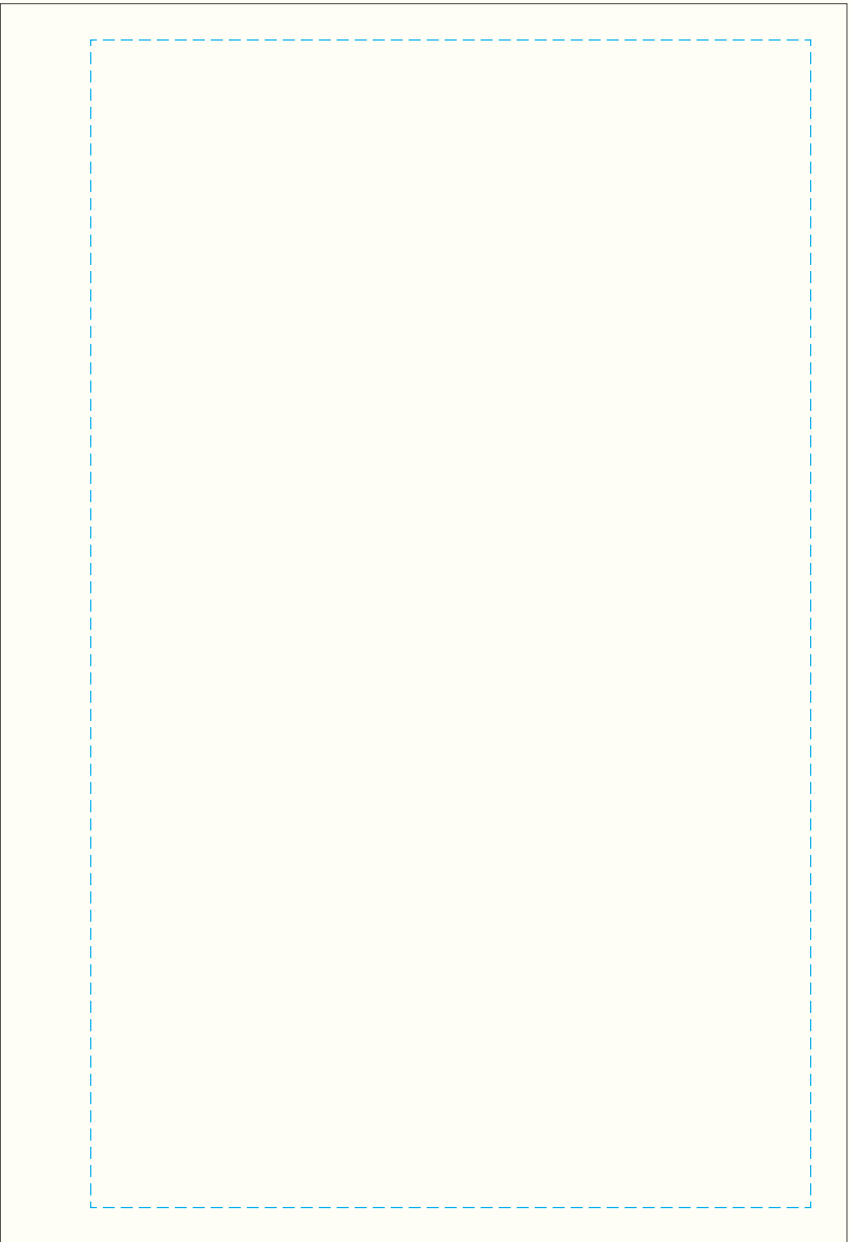
5 out of 8 will be custom pages at the front of notebook

Blue Line = The SIGNIFICANT PRINT AREA
(Keep all critical images & text within this box)
Black Line = Maximum print area
Pink Line = Bleed off to here



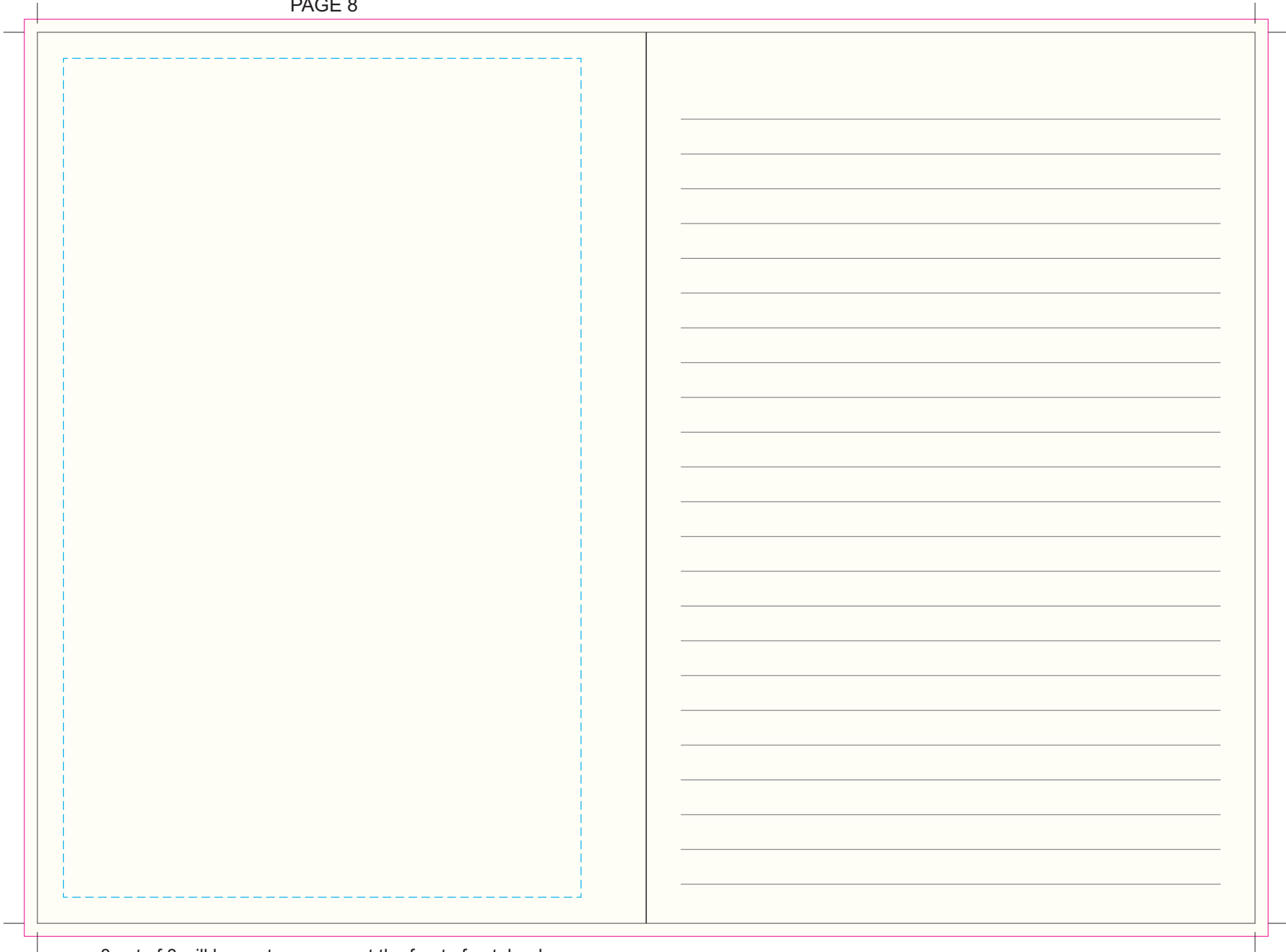
6 out of 8 will be custom pages at the front of notebook

Blue Line = The SIGNIFICANT PRINT AREA
(Keep all critical images & text within this box)
Black Line = Maximum print area
Pink Line = Bleed off to here



7 out of 8 will be custom pages at the front of notebook

Blue Line = The SIGNIFICANT PRINT AREA
(Keep all critical images & text within this box)
Black Line = Maximum print area
Pink Line = Bleed off to here



8 out of 8 will be custom pages at the front of notebook

Blue Line = The SIGNIFICANT PRINT AREA
(Keep all critical images & text within this box)
Black Line = Maximum print area
Pink Line = Bleed off to here